

SS125.F Float Valve Housing

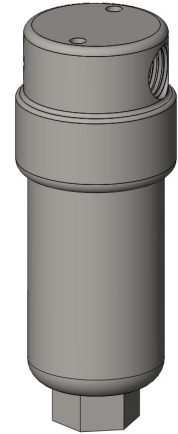
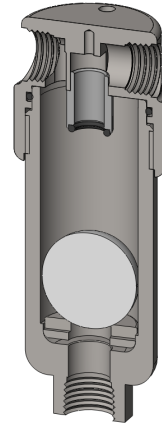
Materials 316L Stainless Steel
Pressure 1500 psi
Ports 1/8", 1/4" & 1/2"

SS125.F series float valve housings are based on our standard SS127 series and have PVDF float ball to shut off the flow when collected liquids reach a certain level.

Special and custom housing can also be supplied with internal arrangements to suit specific applications.

Standard housings have NPT ports and a Viton seal. Other seal types are available as an option. BSPT and BSPP port types are also available.

The housings are free from welds and comply with NACE MR-01-75 and are CE marked in accordance with PED 97/23/EC.



Technical Specifications

Housing Model	SS125.111.F	SS125.221.F	SS125.421.F
Port Size	1/8" NPT	1/4" NPT	1/2" NPT
Drain	1/8" NPT	1/4" NPT	1/4" NPT
Maximum Pressure, psi	1500	1500	1500
Maximum Temperature, °F	210	210	210
Materials of Construction (1)			
Head, Bowl & Internals	316L SS	316L SS	316L SS
Float Ball	PVDF	PVDF	PVDF
Seals (2)	Viton	Viton	Viton
Principle Dimensions in inches			
Diameter	1.40	1.40	1.95
Height	4.05	4.05	4.55
Volume, cc	35	35	37.5
Weight, lbs	1.10	1.10	1.90
Accessories			
Mounting Bracket	MBSS11	MBSS11	MBSS11

Notes

(1) Material abbreviations, 316L SS = 316L Stainless Steel, PVDF = polyvinylidenedifluoride

(2) Add suffix for other seal types, PTFE = .T, Chemraz = .C, Nitrile = N, Kalrez = .K, EPDM = .E, Silicone = .S, (e.g. SS125.421.F.T)