

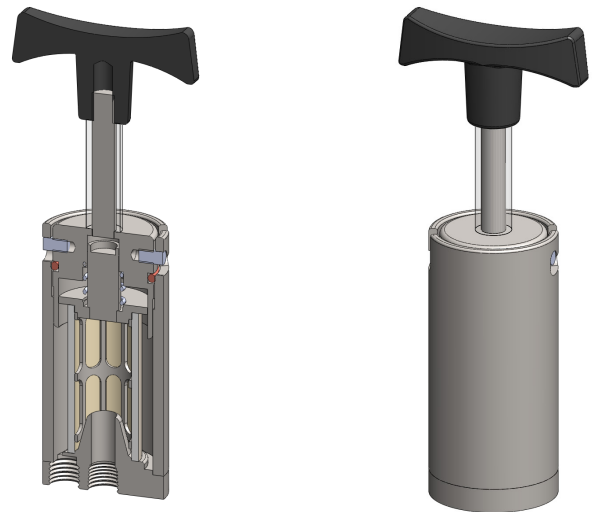
# HRS Series Heatable Filter Housing

<b>Materials</b>	<b>316L SS</b>
<b>Pressure</b>	<b>100 psi</b>
<b>Ports</b>	<b>1/4"</b>
<b>Element</b>	<b>25.64.□ &amp; 25.178.□</b>

The HRS series filter housings are designed for hot gas analysis, for example diesel exhaust. The housings can be heated by fitting a suitable heater to the body, installing in a heated enclosure. The bayonet connection allows fast filter element service even at operating temperatures.

The housings have the inlet and outlet ports in the end of the housing and a support core to hold the element.

Standard housings have NPT ports and include silicone seals. Viton seals are available as an option. BSPT and BSPP port types are also available.



## Technical Specifications

Housing Model	HRS211.201	HRS231.201
Port Size	1/4" NPT	1/4" NPT
Maximum Pressure, psi	100	100
Maximum Temperature, °F	390	390
Port Position	End	End
Internals Type	Support	Support
<b>Materials of Construction (1)</b>		
Head & Internals	316L SS	316L SS
Seals (2)	Silicone	Silicone
Filter Element Code (3)	25.64.□	25.178.□
<b>Principle Dimensions in inches</b>		
Diameter	2.10	2.10
Height of Body	4.45	8.95
Length of Handle	3.55	3.55
Volume, cc	100	100
Weight, lbs	2.75	4.40

### Notes

- (1) Material abbreviations, 316L SS = 316L Stainless Steel
- (2) Add suffix for other seal types, Chemraz = .C, Nitrile = N, Kalrez = .K, EPDM = .E, Viton = V (e.g. HSS211.201.V)
- (3) Replace the □ with the grade required, e.g. 25.64.5S