

# SM015

## SP76 Modular Membrane Housing

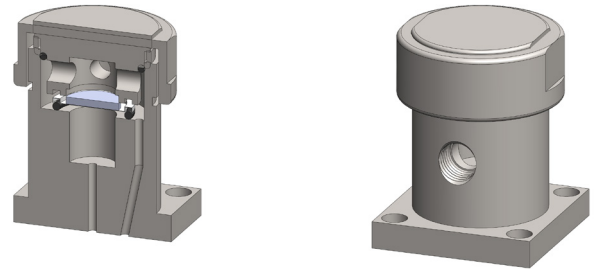
**Materials** 316L SS  
**Pressure** 1500 psi  
**Ports** SP76 & 1/8"  
**Membrane** MT.19.□

The SM015 series SP76 membrane housings are designed for SP76 compliant modular sample systems. The housings use a porous PTFE membrane which is supported by a sintered porous stainless steel disc on the outlet side.

Any liquid in the sample will flow to the 1/8" NPT drain port. The housings should only be used on substrates that are mounted in the horizontal plane with the drain port at the lowest point below the inlet and outlet ports.

The housing design allows a quick change of the membrane as all the line connections are arranged in the body of the housing and the threaded cap means no tools are required for access.

The housings are free from welds and comply with NACE MR-01-75 and are CE marked in accordance with PED 97/23/EC.



## Technical Specifications

Housing Model	SM015.L11	SM015.R11
Inlet/Outlet Connections	SP76	SP76
Drain	1/8" NPT	1/8" NPT
Maximum Pressure, psi	1500	1500
Maximum Temperature, °F (1)	300	300
Flow Direction	Left to Right	Right to Left
Substrate Plane	Horizontal	Horizontal
Inlet	Hole 2	Hole 2
Outlet	Hole 3	Hole 1
<b>Materials of Construction (2)</b>		
Head, Bowl & Internals	316L SS	316L SS
Seals (3)	Viton	Viton
Membrane Code (4)	MT.19.□	MT.19.□
<b>Principle Dimensions in inches</b>		
Diameter	1.50	1.50
Height	1.90	1.90
Volume, cc	5	5
Weight, lbs	0.65	0.65

### Notes

- (1) Maximum temperature of 300°F is due to the PTFE membrane
- (2) Material abbreviations, 316L SS = 316L Stainless Steel
- (2) Add suffix for other seal types, PTFE = .T, Chemraz = .C, Nitrile = N, Kalrez = .K, EPDM = .E, Silicone = .S, (e.g. SM015.L11.T)
- (3) Replace the □ with the grade required, e.g. MT.19.M2