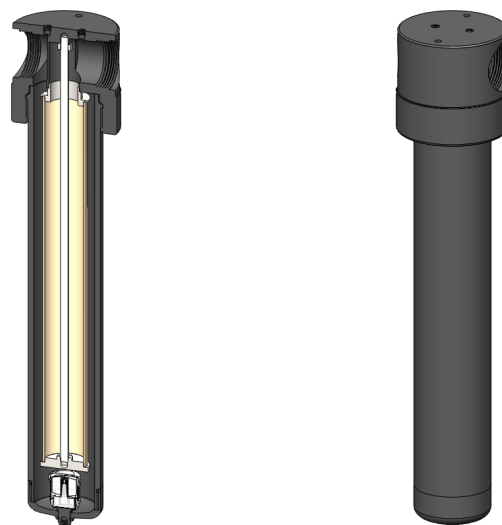


<b>Materials</b>	<b>Aluminum</b>
<b>Pressure</b>	<b>250 psi</b>
<b>Ports</b>	<b>1&amp;1/2" or 2"</b>
<b>Element</b>	<b>51.476.□</b>

The AA433 series filter housings have anodised aluminum head, bowl and internals with a stainless steel tie rod. They are supplied with 1&1/2" or 2" ports and have a range of drain options. These housings are suitable for compressed air systems and general filtration applications.

Standard housings have NPT ports and Viton seals. Other seal types are available as an option. BSPT and BSPP port types are also available.



## Technical Specifications

Housing Model	AA433.711	AA433.761	AA433.771	AA433.811	AA433.861	AA443.871
Port Size	1 & 1/2" NPT	1 & 1/2" NPT	1 & 1/2" NPT	2" NPT	2" NPT	2" NPT
Drain	1/8"	Manual	Automatic	1/8"	Manual	Automatic
Maximum Pressure, psi	250	250	250	250	250	250
Maximum Temperature, °F	250	250	250	250	250	250
<b>Materials of Construction (1)</b>						
Head & Bowl	AL	AL	AL	AL	AL	AL
Internals	AL & SS	AL & SS	AL & SS	AL & SS	AL & SS	AL & SS
Seals (2)	Viton	Viton	Viton	Viton	Viton	Viton
Filter Element Code (3)	51.476.□	51.476.□	51.476.□	51.476.□	51.476.□	51.476.□
Adsorber Cartridge Code (4)	51.476.AD□	51.476.AD□	51.476.AD□	51.476.AD□	51.476.AD□	51.476.AD□
<b>Principle Dimensions in inches</b>						
Diameter	5.30	5.30	5.30	5.30	5.30	5.30
Height	25.60	26.10	26.10	25.60	26.10	26.10
Volume, cc	2500	2500	2500	2500	2500	2500
Weight, lbs	12.10	12.10	12.10	12.10	12.10	12.10
<b>Accessories</b>						
Mounting Bracket	MBAA42	MBAA42	MBAA42	MBAA42	MBAA42	MBAA42

### Notes

- (1) Material abbreviations, AL = Aluminum, SS = Stainless Steel
- (2) Add suffix for other seal types, Chemraz = .C, Nitrile = .N, Kalrez = .K, EPDM = .E, Silicone = .S, (e.g. AA433.711.E)
- (3) Replace the □ with the grade required, e.g. 51.476.5CK, 51.476.S20V, 51.476.T20
- (4) Replace the □ with the type required, e.g. 51.476.AD01