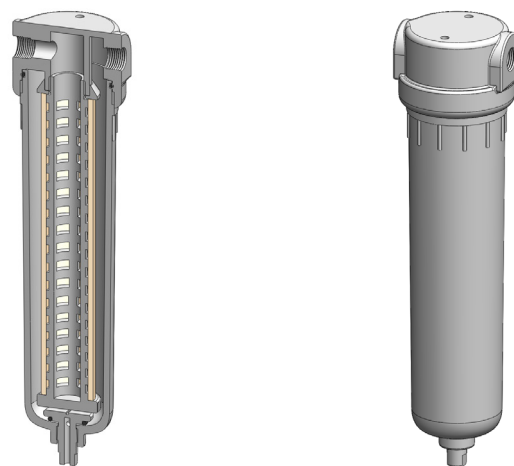


Materials Polypropylene
Pressure 100 psi
Ports 1/4" or 1/2"
Element 25.178.□

PP231 series filter housings are constructed entirely from polypropylene. They are supplied with 1/8" or 1/4" ports and have a range of drain options.

These housings are specified where a good chemical resistance is required.

Standard housings have NPT ports and a Viton seal. Other seal types are available as an option. BSPT and BSPP port types are also available.



Technical Specifications

| Housing Model | PP231.201 | PP231.221 | PP231.261 | PP231.401 | PP231.421 | PP231.461 |
|---------------------------------------|------------|------------|------------|------------|------------|------------|
| Port Size | 1/4" NPT | 1/4" NPT | 1/4" NPT | 1/2" NPT | 1/2" NPT | 1/2" NPT |
| Drain | None | 1/4" NPT | Manual | None | 1/4" NPT | Manual |
| Maximum Pressure, psi | 100 | 100 | 100 | 100 | 100 | 100 |
| Maximum Temperature, °F | 120 | 120 | 120 | 120 | 120 | 120 |
| Materials of Construction (1) | | | | | | |
| Head, Bowl & Internals | PP | PP | PP | PP | PP | PP |
| Seals (2) | Viton | Viton | Viton | Viton | Viton | Viton |
| Filter Element Code (3) | 25.178.□ | 25.178.□ | 25.178.□ | 25.178.□ | 25.178.□ | 25.178.□ |
| Adsorber Cartridge Code (4) | 25.178.AT□ | 25.178.AT□ | 25.178.AT□ | 25.178.AT□ | 25.178.AT□ | 25.178.AT□ |
| Principle Dimensions in inches | | | | | | |
| Diameter | 2.55 | 2.55 | 2.55 | 2.55 | 2.55 | 2.55 |
| Height | 9.70 | 9.70 | 10.15 | 9.70 | 9.70 | 10.15 |
| Volume, cc | 310 | 310 | 310 | 310 | 310 | 310 |
| Weight, lbs | 0.55 | 0.55 | 0.55 | 0.55 | 0.55 | 0.55 |
| Accessories | | | | | | |
| Mounting Bracket | MBSS21 | MBSS21 | MBSS21 | MBSS21 | MBSS21 | MBSS21 |

Notes

- (1) Material abbreviations, PP = Polypropylene
- (2) Add suffix for other seal types, Chemraz = .C, Nitrile = N, Kalrez = .K, EPDM = .E, Silicone = .S, (e.g. PP231.221.E)
- (3) Replace the □ with the grade required, e.g. 25.178.5CK, 25.178.T20
- (4) Replace the □ with the type required, e.g. 25.178.AT01